



Budget Basics: Family & Economic Security



FY 2022

**An introduction to Missouri's
family & economic security
services and funding**

Family & Economic Security

Missouri's budget supports a number of services that are aimed at promoting healthy and stable families, individuals, and communities. Very little general revenue is used to fund these programs and most are funded entirely with federal dollars.

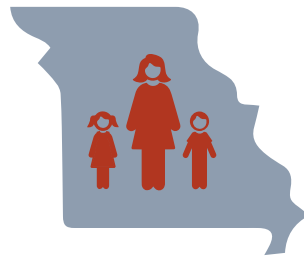
For the purposes of this primer, family & economic security programs are defined as those which serve struggling workers, seniors, or families with children or are broadly aimed at improving the health and stability of communities.

Temporary Assistance for Needy Families (TANF):
6,832 families per month

Child Support:
308,000 cases

Community Action Agencies:
200,000 people

Low-Income Weatherization Assistance Program:
2,915 households



Community Partnerships:
520,000 people

Energy Assistance:
93,500 households

Energy Crisis Intervention Program:
74,000 households

This primer is intended to serve as a guide for Missourians who care about family and community support programs, and increase the transparency of the budget by providing information on where key programs can be found in the budget bills. **Amounts included are Appropriated and reflect Gubernatorial vetoes, but not any mid-year restrictions that may have been made.**

The vast majority of family and economic security programs are paid for with federal funds – with many programs receiving no state general revenue or earmarked funding at all.

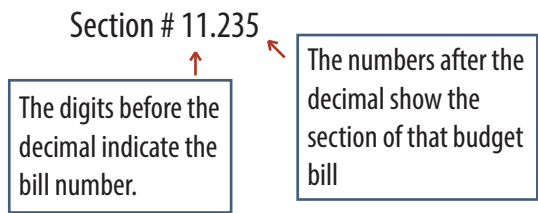
Budget Basics

Missouri's state budget funding comes from three main sources:

- **Federal:** The first source of the funds come from the federal government for very specific purposes, such as Medicaid.
- **Earmarked State Funds:** Another source is state revenue dedicated to specific state purposes, like the fuel tax, which is dedicated to transportation.
- **State General Revenue:** Lawmakers have the most authority to allocate the final source of funds, referred to as General Revenue.

Family and economic security programs in Missouri are funded through the Department of Social Services (DSS) – Family Support Division.
[House Bill 11]

In order to track appropriations for a specific program, one must locate the appropriate budget bill and section number. (available at <https://oa.mo.gov/budget-planning/>)



See Appendix for a detailed list of specific family and economic security programs, relevant section numbers, and current year funding levels and sources.

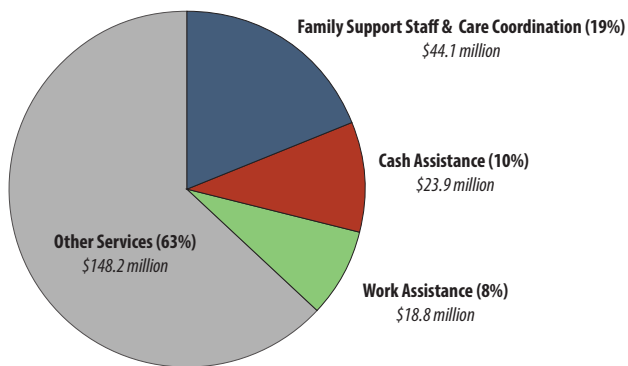
Unless otherwise noted, all data on funding levels & sources, eligibility criteria, and program enrollment & efficacy were obtained from the 2023 Department Budget Requests through the Office of Administration, Division of Budget Planning
<https://oa.mo.gov/>.

Cash Assistance

Temporary Assistance for Needy Families (TANF) provides cash assistance to families with children based on income and family size for a period not to exceed 45 months total in a lifetime with some exceptions due to age, disability, and hardship. Cash assistance accounts for \$23.9 million (10%) of federal TANF funds while an additional \$18.8 million (8%) funds transitional work assistance for recipients. The remaining TANF funds are sprinkled throughout the family supports budget in order to fund programs that advance the purpose of the TANF program, including mentoring/after school programs, job training and work supports, and child welfare services.

**Cash assistance is projected to assist 6,832 Missouri families per month.
The average monthly payment is projected to be \$224 per family.**

Missouri FY 2022 Federal TANF Block Grant Spending

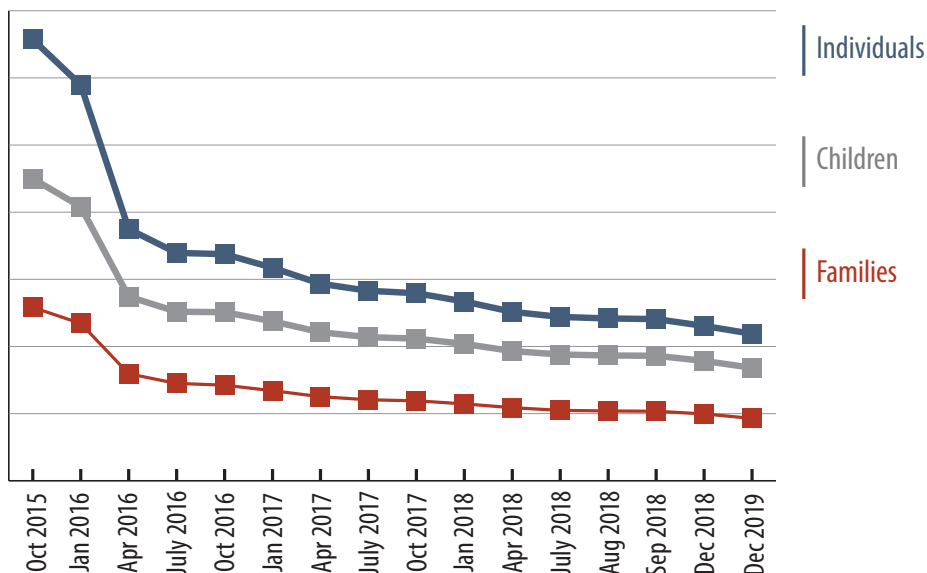


Senate Bill 24:

- Passed in 2015 and implemented January 1, 2016.
- Decreased the lifetime limit that families could receive assistance from 60 months to 45 months, and implemented full-family sanctions.
- As a result, nearly 20,000 children lost assistance between October 2015 and October 2016.¹

Total Families, Children, & Individuals Receiving TANF Cash Assistance

October 2015 - December 2019



Energy Assistance

The federal government provides funding for energy assistance programs that provide limited financial assistance to help low-income Missouri families, seniors and people with disabilities with the costs of heating and cooling their homes in order to reduce the health and safety risks associated with disconnection of utility services.

Missouri’s Low Income Home Energy Assistance Program (LIHEAP) is administered primarily through contracts with Community Action Agencies and other nonprofits across Missouri. *Eligibility was expanded in 2021 to households with incomes less than 60% of the state median income (SMI).* LIHEAP provides:

Energy Assistance (EA) is used primarily to make direct payments to energy providers in order to maintain heating and cooling services for the families who are eligible for assistance. Assistance is targeted toward low income households with high energy costs. Homes with seniors, children under six, and the disabled are prioritized.

Energy Crisis Intervention Program (ECIP) is used to make direct payments to energy providers to avoid the disconnection of or to reconnect utilities.

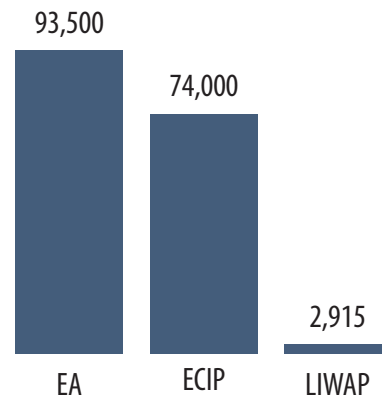
LIHEAP Income Requirements

Size of Family Unit	Monthly
1	\$2,211
2	\$2,891
3	\$3,571
4	\$4,252

Recipients of LIHEAP must have household income < 60% SMI and cannot have assets that value more than \$3,000.²

Number of Households Served Through Energy Assistance Programs

Projections for FY 2022



The Low-Income Weatherization Assistance Program (LIWAP) provides financial assistance to low-income households to assist in reducing utility costs through home weatherization. Ten percent of energy assistance funding is allocated to LIWAP which is administered through the Department of Natural Resources.

A projected 2,915 households will receive LIWAP services in FY2022.

Child Support

Child Support Programs are charged with collecting financial support for children through a range of programs including:

- paternity establishment
- establishment, modification, and enforcement of child support orders
- mediation services

The child support program is also charged with securing private health care coverage information, establishing and enforcing medical support obligations for children and assisting with efforts to contain MO HealthNet costs by identifying possible third parties liable for medical costs.



Community Supports

Community Partnerships

Missouri has twenty **Community Partnerships** that work to bring together existing community organizations in order to design, implement, and evaluate community strategies to ensure the safety and health of individuals in their communities in addition to promoting school readiness and success. The network of community partnerships covers the entire state and is funded primarily with federal dollars.

The community partnerships are projected to serve 520,000 individuals in FY2022.

Community Partnerships core areas of focus are to:

- Keep children and families safe and healthy.
- Prepare children to enter and succeed in school.
- Train and prepare parents and teens to enter and remain in the workforce.

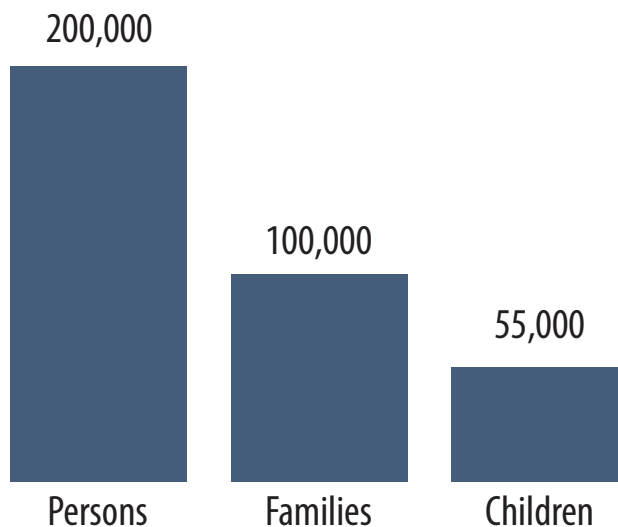
Community Action Agencies

Missouri has nineteen **Community Action Agencies (CAAs)** that work to reduce poverty, revitalize low-income communities, and to empower low-income families and individuals to become self-sufficient. This network of CAAs serves the entire state with funding obtained primarily through the Federal Community Services Block Grant (CSBG). Activities serve to reduce unemployment and malnutrition, and address inadequate education, housing, and income.

The CAAs are projected to serve 200,000 individuals in FY2022.

Individuals Served by CAAs

Projected, FY2021



Family Stabilization

A range of programs exist that promote healthy and stable families. These programs include:

Healthy marriage/fatherhood programs help connect fathers with resources to help provide financial assistance to their children, establish legal paternity, and actively participate in caregiving tasks.

Domestic violence programs provide funding for domestic violence shelters and programs throughout the state. These shelters provide housing and supportive services for victims of domestic violence and their children. **In 2022, the domestic violence program will shelter over 4,500 women and over 4,000 children. Nearly 23,000 individuals will be turned away because shelters are full.**

The Sexual Assault Program provides funding to programs that assist victims age 14 and up who have experienced sexual assault. The programs provide support services including therapy, support groups, hotlines, and medical and legal advocacy.

Emergency Solutions Grant Program provides emergency shelter for Missourians who are homeless, services to prevent homelessness, and services to rapidly re-house those that become homeless. **In FY 2023, it is expected that this program will transfer to the Department of Economic Development. It will serve almost 40,000 Missourians in the current year.**

Victims of Crime Act (VOCA) Funding is administered by DSS and is used to support community-based victim assistance programs and services that are directly related to the healing and recovery of crime victims.

APPENDIX

Amounts shown are Appropriated and reflect Gubernatorial vetoes, but do not include any mid-year restrictions that may have been made.

Program	Department Budget	Budget Section	FY22 GR	FY22 Federal	FY22 Other	FY22 Total
TANF - Cash Assistance	DSS	11.155	\$3,856,800	\$23,948,631	\$0	\$27,805,431
TANF - Work Assistance	DSS	11.150	\$1,799,887	\$18,800,605	\$0	\$20,600,492
Energy Assistance	DSS	11.195	\$0	\$112,323,902	\$0	\$112,323,902
Child Support Field Staff and Operations	DSS	11.235	\$6,865,440	\$25,417,996	\$2,761,555	\$35,044,991
Child Support Reimbursement to Counties	DSS	11.240	\$2,240,491	\$14,886,582	\$400,212	\$17,527,285
Community Partnerships	DSS	11.140	\$732,328	\$7,903,799	\$0	\$8,636,127
Community Services Block Grant (CAAs)	DSS	11.180	\$0	\$51,484,053	\$0	\$51,484,053
Healthy Marriage/ Fatherhood	DSS	11.160	\$0	\$2,500,000	\$0	\$2,500,000
Domestic Violence	DSS	11.200	\$5,000,000	\$4,105,254	\$0	\$9,105,254
Assist Victims of Sexual Assault	DSS	11.215	\$750,000	\$0	\$0	\$750,000
Emergency Shelter Domestic Violence	DSS	11.200	\$0	\$562,137	\$0	\$562,137
Emergency Solutions Grant Program	DSS	11.185	\$0	\$32,511,553	\$0	\$32,511,553
Victims of Crime Act	DSS	11.205 and 11.210	\$0	\$65,035,217	\$0	\$65,035,217
Family Support Administration	DSS	11.100	\$1,603,815	\$14,790,346	\$573,655	\$16,967,816

Income Maintenance Field Staff and Operations	DSS	11.105	\$33,300,726	\$53,740,920	\$890,475	\$87,932,121
Family Support Staff Training	DSS	11.110	\$103,209	\$126,389	\$0	\$229,598
Electronic Benefits Transfer (EBT)	DSS	11.115	\$1,696,622	\$4,519,235	\$0	\$6,215,857
FAMIS	DSS	11.125	\$517,908	\$1,171,386	\$0	\$1,689,294
Missouri Eligibility and Enrollment System (MEDES)	DSS	11.130	\$6,491,503	\$57,671,900	\$970,000	\$65,133,403

NOTE: Many of the programs outlined in this primer funded through multiple sources in the budget and cross multiple budget sections. As such, the amounts provided in this Appendix should not be totaled to obtain a total cost of family and community supports as this would overstate the amount spent on these programs in the budget.

Some programs in this primer (such as FAMIS & the Eligibility and Enrollment System) provide administration for programs not covered in this primer, including Child Care Assistance and Medicaid.

Notes

1. Missouri Department of Social Services, “Family Support Division, MO HealthNet Division, Monthly Management Report”
2. Missouri Department of Social Services. Available: <https://dss.mo.gov/fsd/energy-assistance/>